



CAMBRIA

PHASE 4



Plan	Single Pitched	Pitched Roof	Flat Roof
Amber			
1,835 Sq Ft 3 bedrooms, 2 baths, 2 car garage		\$422,000	n/a
1,835 Sq Ft 3 bedrooms, 2 baths, 3 car garage		\$437,000	n/a
Amber RV Garage Option			
15'3" x 47' deep RV garage (12x14 door)		\$499,000	n/a
Garnet			
2,178 Sq Ft 3 bedrooms, 3 baths, 3 car garage		\$493,000	\$505,000
Sapphire			
2,213 Sq Ft 3 bedrooms, 2 baths, 3 car garage	\$548,000	\$522,000	n/a
Jade			
2,448 Sq Ft 4 bedrooms, 3 baths, 3 car garage		\$546,000	\$568,000
Jade RV Garage			
15'4" x 49 ft RV garage 12x14 door		\$607,000	\$630,000
Onyx			
2,625 Sq Ft 3 bedrooms, 3 baths, 3 car garage		\$589,000	\$603,000
Pearl			
2,729 Sq Ft 3 bedrooms, 3 baths, 3 car garage		n/a	\$627,000
Aquamarine			
2,815 Sq Ft 3 bedrooms, 2 ½ baths, 3 car garage		n/a	\$648,000
Aquamarine RV Garage 15'3" x 49ft on side of house (12x14 Door)		n/a	\$740,000

Price effective 3/15/2022

RV garages include 50 amp outlet, sewer dump outside the garage and a man door.

*Prices are subject to change without notice.





CAMBRIA

PHASE 4



STANDARD FEATURES

PLANS: AMBER • GARNET • SAPPHIRE • JADE • ONYX • PEARL • AQUAMARINE

RUBY SERIES

- 8 ft Front Door - Fiberglass, paint grade
- Cabinets - Beechwood, Maple Stained Shaker Style 36" Uppers 3" Molding
- Group 1 Granite Tops Kitchen & Baths with Undermount sinks
- Laundry room countertop Laminate
- Upgraded Appliances - GE - Stainless with Refrigerator
- Tile - Allowance \$2.25 sq ft - Deco Tile - Allowance \$.50 sq ft
- Tile luxury vinyl floors in all locations except Carpet in Livingroom, bedrooms and closets
- Standard Lighting Traditional or Contemporary
- Ceiling Fans with Lights in Livingroom and Bedrooms
- Plumbing Fixtures - Moen Traditional or Contemporary, Brushed Nickel
- 8 ft Primary doors - Paint Grade 2 Panel
- 5" Baseboards 3" Casing around doors
- 225 Amp Electrical Service
- \$5,000 Landscape Allowance
- Manufactured Stone Veneer on Front Columns
- Colored Stamped Concrete Driveways and Patio
- Large Covered Patios with Lighting

UPGRADED

DIAMOND SERIES

- 8 ft Front Door - Choice of Metal door with glass - metal doors are chosen from inventory - double doors are optional (standard on some plans)
- Cabinets - Beechwood, Knotty Alder or Maple Shaker Style or Raised Panel 36-42" Uppers large crown molding with handle
- Under Cabinet LED Lighting
- Custom Lighting Fixture - Allowance \$1.50 sq ft and LED Can Lights
- Group 2 Granite or Quartz Tops throughout with Undermount sinks - Laundry room included
- Upgrade GE Appliances - GE Cooktop, stainless hood, built in combo convection microwave and convection oven, upgraded dishwasher, french door refrigerators
- Primary Doors are Stained 8 ft Knotty Alder per plan
- \$6,000 Landscape Allowance

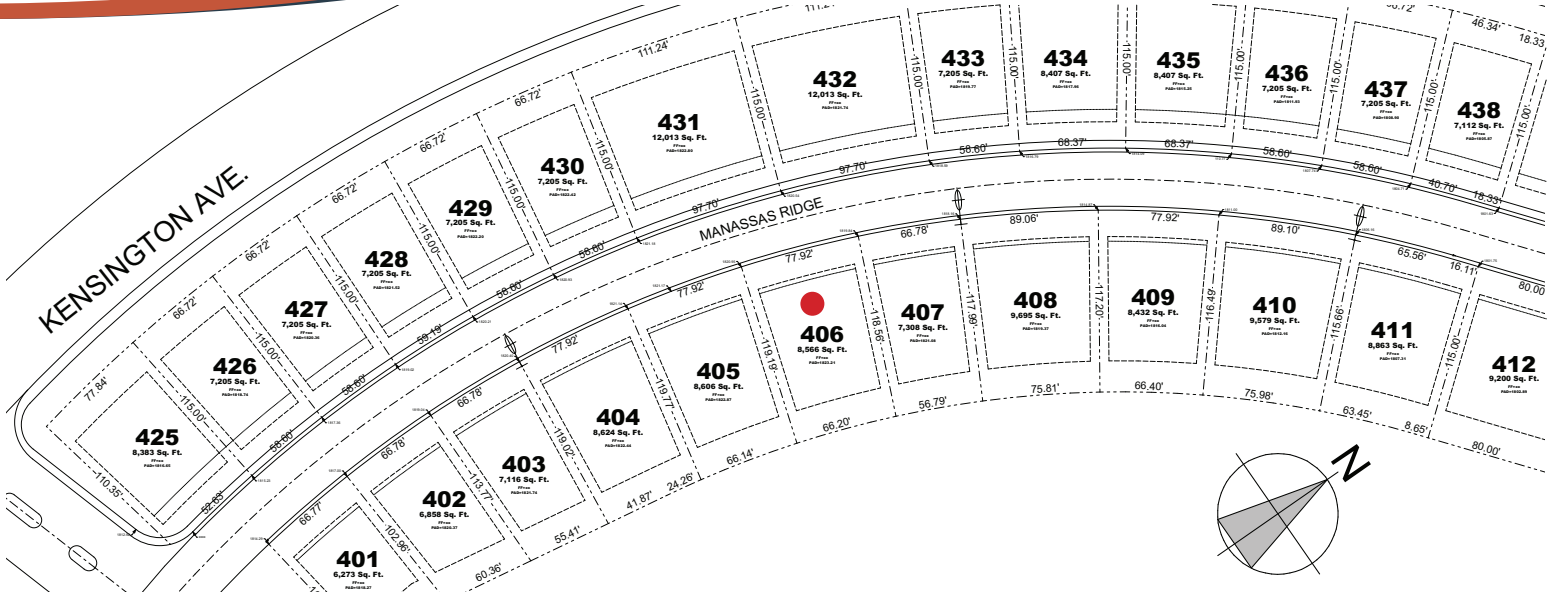
Prices are subject to change without notice.



CAMBRIA

PHASE 4

MAP



LIST OF LOTS

401	6273 sq. ft.	\$89,000	425	8383 sq. ft.	\$80,000
402	6858 sq. ft.	\$99,000	426	7205 sq. ft.	\$75,000
403	7116 sq. ft.	\$89,000	427	7205 sq. ft.	\$75,000
404	8624 sq. ft.	\$100,000	428	7205 sq. ft.	\$75,000
405	8606 sq. ft.	\$150,000	429	7205 sq. ft.	\$75,000
406	8566 sq. ft.	\$120,000 SOLD	430	7205 sq. ft.	\$75,000
407	7308 sq. ft.	\$90,000	431	12,013 sq. ft.	\$145,000
408	9695 sq. ft.	\$130,000	432	12,013 sq. ft.	\$145,000
409	8432 sq. ft.	\$75,000	433	7205 sq. ft.	\$65,000
410	9579 sq. ft.	\$95,000	434	8407 sq. ft.	\$80,000
411	8863 sq. ft.	\$90,000	435	8407 sq. ft.	\$80,000
			436	7205 sq. ft.	\$70,000
			437	7205 sq. ft.	\$70,000
			438	7112 sq. ft.	\$65,000

Prices are subject to change without notice.
Price effective 3/15/2022

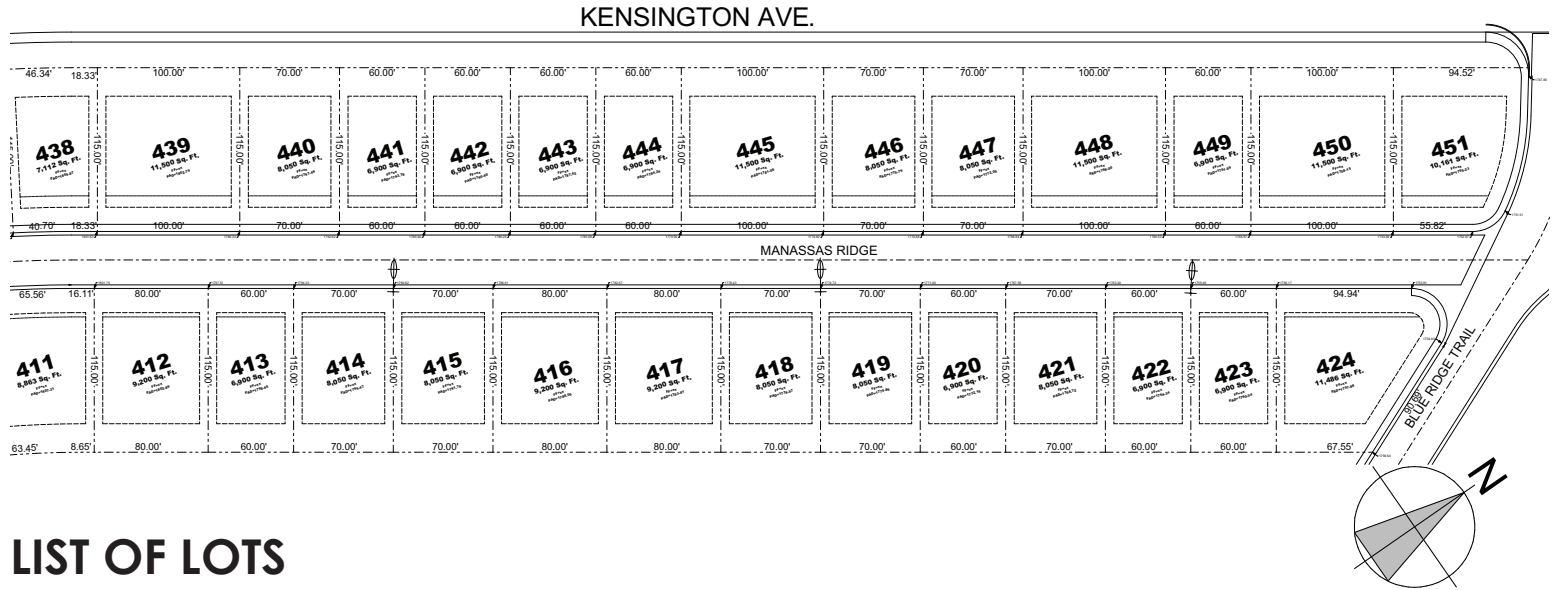


CAMBRIA

PHASE 4



MAP



LIST OF LOTS

412	9200 sq. ft.	\$85,000	439	11,500 sq. ft.	\$150,000
413	6900 sq. ft.	\$55,000	440	8050 sq. ft.	\$75,000
414	8050 sq. ft.	\$50,000	441	6900 sq. ft.	\$60,000
415	8050 sq. ft.	\$70,000	442	6900 sq. ft.	\$60,000
416	9200 sq. ft.	\$85,000	443	6900 sq. ft.	\$60,000
417	9200 sq. ft.	\$90,000	444	6900 sq. ft.	\$60,000
418	8050 sq. ft.	\$85,000	445	11,500 sq. ft.	\$145,000
419	8050 sq. ft.	\$75,000	446	8050 sq. ft.	\$75,000
420	6900 sq. ft.	\$60,000	447	8050 sq. ft.	\$75,000
421	8050 sq. ft.	\$80,000	448	11,500 sq. ft.	\$145,000
422	6900 sq. ft.	\$70,000	449	6900 sq. ft.	\$65,000
423	6900 sq. ft.	\$55,000	450	11,500 sq. ft.	\$145,000
424	11,486 sq. ft.	\$85,000	451	10,161 sq. ft.	\$75,000

Prices are subject to change without notice.
Price effective 3/15/2022